

## iSense Asset Suite

### Maximum Performance of ISM<sup>®</sup> Sensors



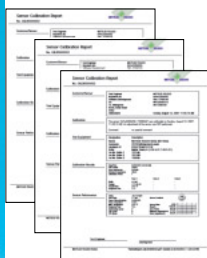
#### Sensor performance always up to date

The intuitive Key Performance Table enables you to evaluate the condition of an ISM<sup>®</sup> sensor at a glance, without the need of a transmitter.



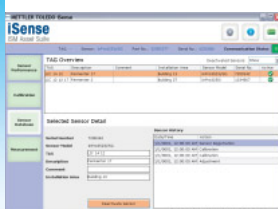
#### Intuitive PC calibration

Enhance your productivity with the advanced software application for your sensor calibration management. Accurate pre-calibration in the lab yields better sensor field performance.



#### Comply with documentation requirements

The documentation of every calibration as well as the entire sensor history is an integral part of iSense Asset Suite. With a complete and reliable documentation of each sensor used, requirements to regulatory standards are easily met.



#### Centralized database

A unique database allows you to find and manage all equipment that has ever been in operation. Furthermore it offers multiple data export possibilities for detailed sensor analysis.



**iSense**  
ISM Asset Suite

#### Run your ISM<sup>®</sup> sensors with maximum performance over the entire life cycle

The iSense ISM<sup>®</sup> (Intelligent Sensor Management) Asset Suite offers you a unique means to optimize the performance of pH and DO sensors for enhanced reliability and process safety.

Simply connect your ISM sensor via USB port to your PC and get access to various intuitive analysis, calibration and documentation applications. Decide instantly whether to re-use or discard a sensor with the real-time sensor information.

The numerous calibrations performed each year are faster and error-free. Calibration information is collected, managed, and analyzed efficiently and documented consistently to satisfy regulatory requirements.

Optimize your sensor asset base over the entire life cycle with the iSense ISM<sup>®</sup> Asset Suite for enhanced plant reliability and more efficient use of field resources.

## **ISM** Digital ISM – stay ahead of your maintenance tasks

The ISM technology (Intelligent Sensor Management®), a new breakthrough technology from METTLER TOLEDO, allows users of process analytical equipment to significantly reduce the maintenance costs of loops, while increasing the safety of the production process.

Sensors equipped with ISM are continuously monitored for defects and wear, and anticipating failure before it happens. Whereas conventional sensors need careful and time-consuming calibration in the field, sensor replacement with ISM sensors pre-calibrated with iSense takes place in seconds.

- An ISM measurement loop is more reliable and generates less maintenance costs than a conventional equivalent loop.
- Predictive maintenance is easy with the adaptive calibration timer that calculates the time to the next calibration.
- Moreover, ISM enables electronic documentation of the sensor operation, reducing errors and time-consuming paperwork.
- The fully digital and low-impedance signal transmission secures a trouble-free, humidity-insensitive communication.
- Broad portfolio of high-performance pH and DO sensors available.
- Seamless integration into a process control system with PROFIBUS® and FOUNDATION® fieldbus digital communication.



M 700 multiparameter transmitter



O<sub>2</sub> sensor InPro® 6850 i



pH sensor InPro® 3253 i

[www.mt.com/pro](http://www.mt.com/pro)

Visit for more information

Sales and service:



Management System certified according to ISO 9001 / ISO 14001

### Mettler-Toledo AG

Process Analytics  
CH - 8902 Urdorf, Switzerland  
Phone +41 44 729 62 11  
Fax +41 44 729 66 36

Subject to technical changes.  
© 12/2007 Mettler-Toledo AG.  
Printed in Switzerland. 52 900 326