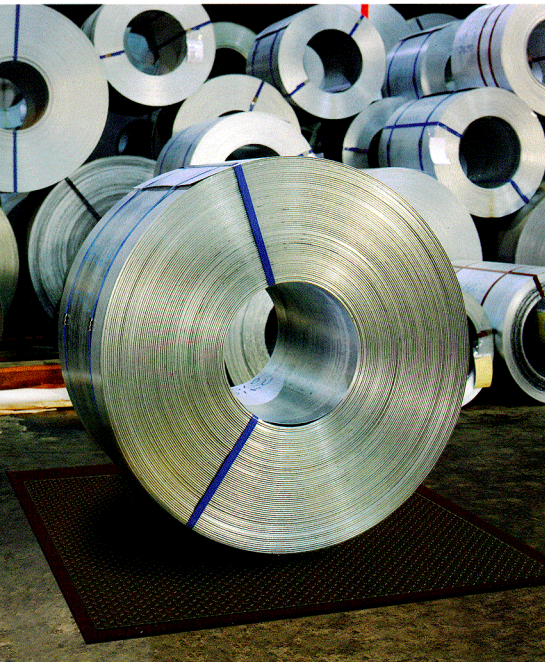
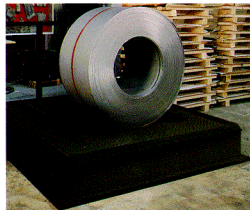


# MG4500 LIFTMATE™ HD Floor Scales



Designed for Heavy  
Duty Use...40,000 lb &  
60,000 lb Capacities

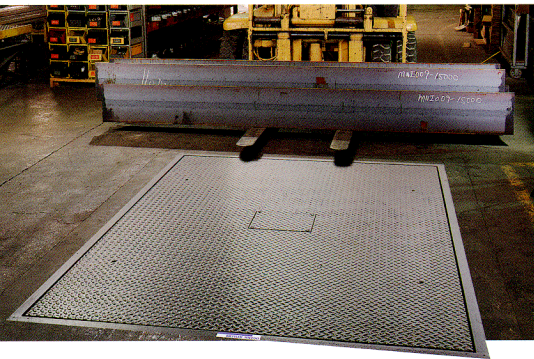


Rugged and Flexible...  
Install Above Ground  
or Flush with Floor

**METTLER TOLEDO**

Ideal For Weighing Steel Coils and Heavy Freight with Large Forklifts

# Rugged, Heavy Duty Floor Scales



## CENTERLIGN™ Suspension

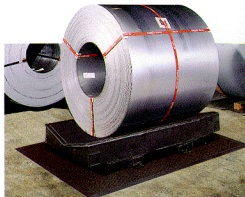
Our patented CENTERLIGN suspension, with its unique rocker pin and slider cup, automatically centers the platform so only vertical forces are applied to the load cells.



## OPTIONS/ACCESSORIES

### Coil Cradle

For mounting on the platform. The cradle is available in seven sizes, ranging from 3' wide x 4' long to 6' wide x 7' long, with a "V" trough saddle constructed of 1/2" plate with a 3/8" rubber pad where coil contact is made. The cradle can be removed for forklift weighing applications.



## Mettler-Toledo, Inc. Scales & Systems

USA  
350 W. Wilson Bridge Rd.  
Worthington, Ohio 43085  
TEL (800) 786-0038  
FAX (614) 438-4783

## Mettler-Toledo Inc.

Canada  
TEL (800) 263-6593  
FAX (905) 681-1511

## Mettler-Toledo Ltd.

Australia  
TEL (61) 3 9646 4551  
FAX (61) 3 9645 3935

## International Operations

Americas and Pacific Rim  
TEL (614) 438-4801  
FAX (614) 438-4755

Europe, Africa, Near East  
TEL (41) 1 944 22 11  
FAX (41) 1 944 30 60

Specifications subject to change  
without notice.  
© 1995 Mettler-Toledo, Inc.  
METTLER TOLEDO™, LIFTMATE™  
and CENTERLIGN™ are trademarks  
of Mettler-Toledo, Inc.  
Printed on recycled paper  
and is recyclable.  
Printed in USA.

20M0895  
FLOOR SCALES  
PS1004SE

**M**ettler Toledo™ designed the MG4500 fully electronic floor scale line for your heavy duty applications. They're truly rugged...for example, the 60,000 lb model is capable of withstanding the impact of a 30 ton steel coil loaded directly onto the optional coil cradle with a loading speed of up to 15 feet-per-minute. Provides for 100% end loading...making them also ideal for concentrated loads such as large forklifts.

The scale may be either surface (top-of-floor) or flush (in-floor) mounted. When flush mounted, the scale frame is used as the pit coping...no additional materials required. The platform and sub-frame assembly are of mild steel. The scale platform has a mild steel smooth deck surface.

They're available in a variety of standard sizes. Capacities are 40,000 lb and 60,000 lb. Platform sizes range from 5' x 5' to 8' x 10'. The mild steel smooth platform deck is 3/8" thick on the 40,000 lb

units, and 1/2" thick on the 60,000 lb units. Both decks are supported by wide flanged heavy duty I-beams. Four lifting points permit the scale platform to be easily lifted for periodic inspection and maintenance.

### Protected Load Cells

Load cells are stainless steel for enhanced environmental protection. They are also designed to withstand accidental overloads up to 150% of the load cell capacity for maximum durability.

### NEMA 4X Junction Box

The 304 stainless steel junction box assembly is designed to NEMA 4X standards. Access to the junction box is from the top of the scale. Its mounting design within the scale resists moisture or any other corrosive element from entering.

### Standard Sizes

Capacity	Load Cell Size	Available Platform Sizes
40,000 lb	4 x 20,000 lb	5' x 5', 5' x 7', 6' x 6', 6' x 8', 7' x 9', 8' X 10'
60,000 lb	4 x 45,000 lb	5' x 5', 5' x 7', 5' x 8', 6' x 6', 6' x 8', 7' x 7', 8' X 8'

Features	Benefits
<b>No Adjustments</b>	All mechanical parts are factory set.
<b>Centerlign Suspension</b>	Assures only vertical forces are transmitted.
<b>100% End Loading</b>	Ideal for forklifts and other concentrated loads.
<b>Low Profile</b>	8 3/4" for 40K and 10 1/2" for 60K.
<b>Tough Construction</b>	Engineered for heavy, loads. Stainless steel load cells and J-box.
<b>LIFTMATE Frame</b>	Excellent protection for Top-of-Floor installations, and integral Pit Frame for In-Floor installations.

See your nearest authorized distributor for details.